



GIS FOR COVID 19 RESPONSE

*“A collaboration between
MOHMS & MLMR”*

COVID 19 INCIDENT MANAGEMENT TEAM (IMT)

PURPOSE

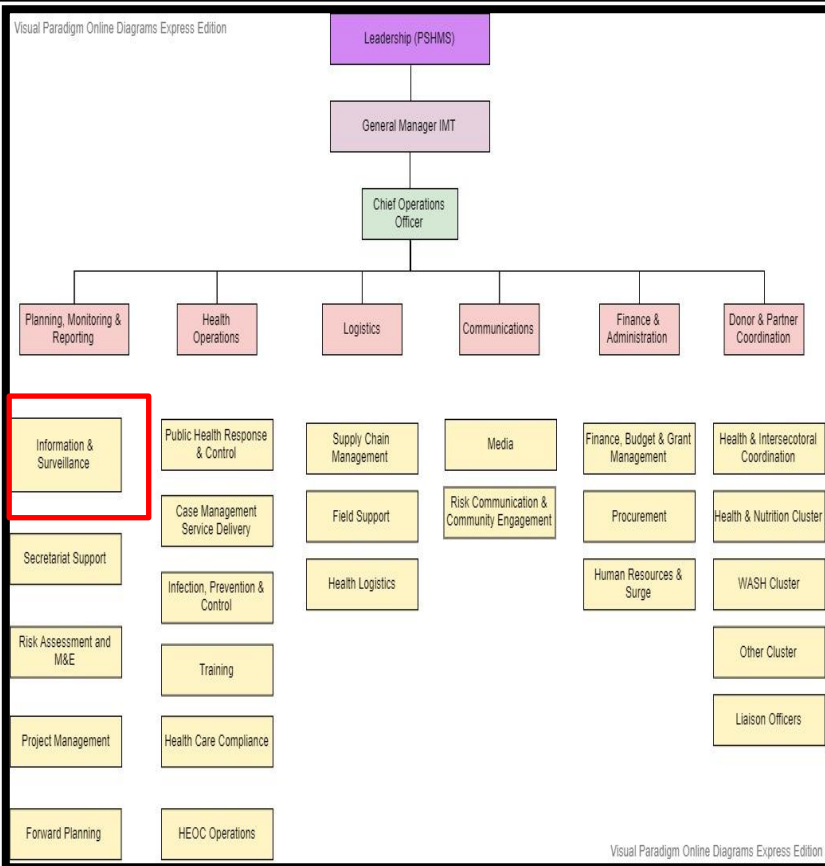
GEOSPATIAL
INFORMATION



The purpose of the IMT is to:

1. Responsible for development and implementation of the COVID-19 Preparedness and Response Plan
2. Provide overall supervision, strategic guidance and monitoring of the preparedness and response to COVID-19
3. Provide Key Liaison Between MoHMS and Support Agencies for COVID-19 preparedness and response
4. Responsible for COVID-19 Operations & Procurement
5. Provide support to the Governance of COVID-19 through support and guidance to Cabinet sub-committee
6. Provide Secretariat for PS's Forum
7. Liaison with the COVID-19 Taskforce for Policy and Strategic Guidance

COVID 19 IMT HIERARCHY



This function collects, analyses and disseminates information on current situation and performance of COVID-19 response to assist evidence-based decision-making for strategic leadership:

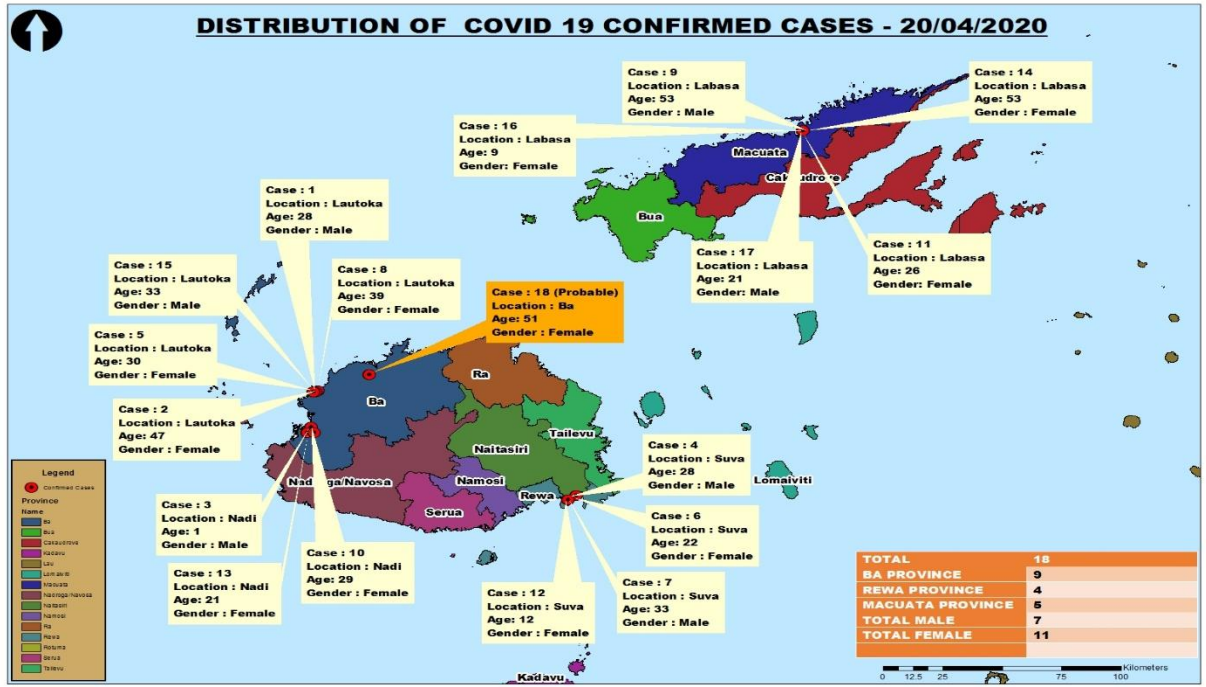
- Collects, analyses and disseminates information on health risk assessments and needs
- Monitors and evaluates service coverage and gaps, and performance of the response.
- Develops and continually refine the response through forward planning, as well as recovery planning.
- Monitors IMT project implementation and promotes standardized management throughout the project management cycle.
- Produces a daily national response situation report
- Provides Secretariat support for PS's Forum and Cabinet Sub-Committee

GIMs CORE ACTIVITIES

1. Mapping of COVID 19 Operations

- ✓ COVID 19 cases including recovered, quarantine, active, death cases, suspected and watch list
- ✓ Operational fever clinics
- ✓ Operational isolation centers (both community and hospital)
- ✓ People currently isolated in the government isolation facilities
- ✓ Lockdown boundaries and topographical information within such as schools, commercial centers, population distribution for decision making
- ✓ Population Distribution
- ✓ Naval quarantine sites

DISTRIBUTION OF COVID 19 CONFIRMED CASES - 20/04/2020



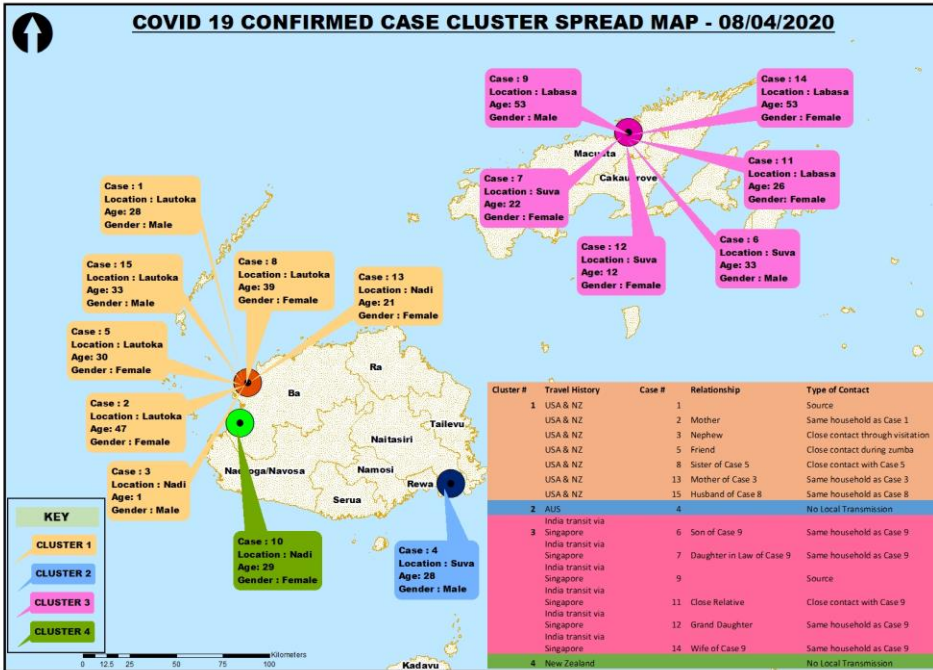
GIMs CORE ACTIVITIES

CLUSTER MAPPING

ISOLATION FACILITIES

COVID 19 CONFIRMED CASE CLUSTER SPREAD MAP - 08/04/2020

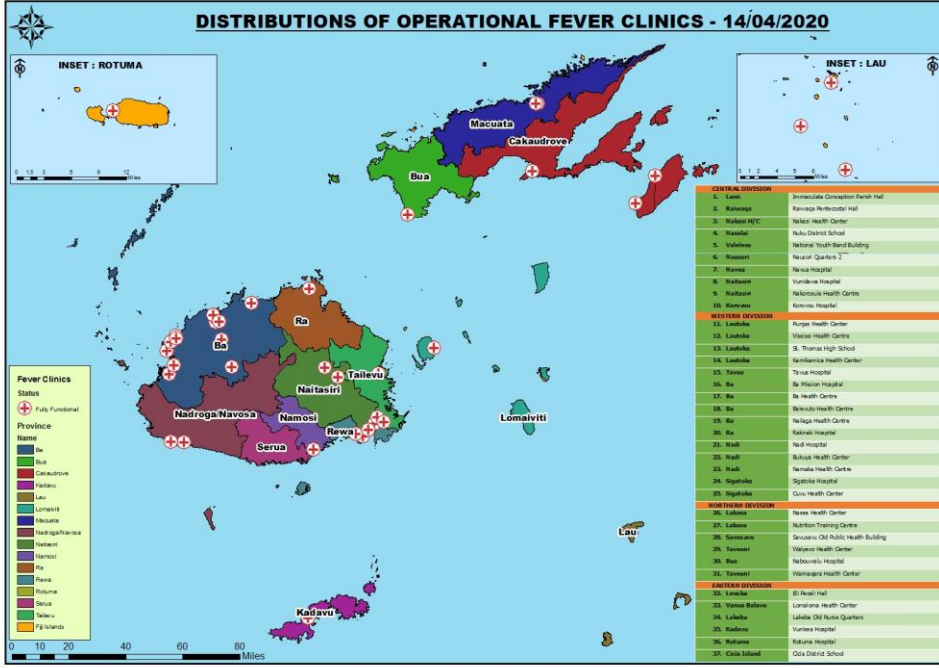
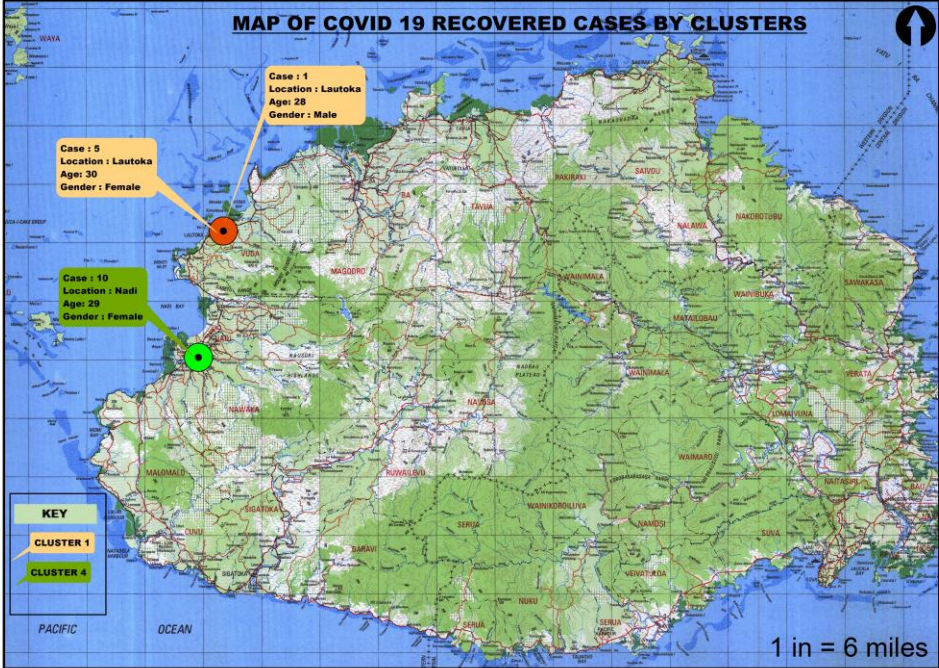
DISTRIBUTION OF OPERATIONAL ISOLATION FACILITIES - 08/04/2020



GIMs CORE ACTIVITIES

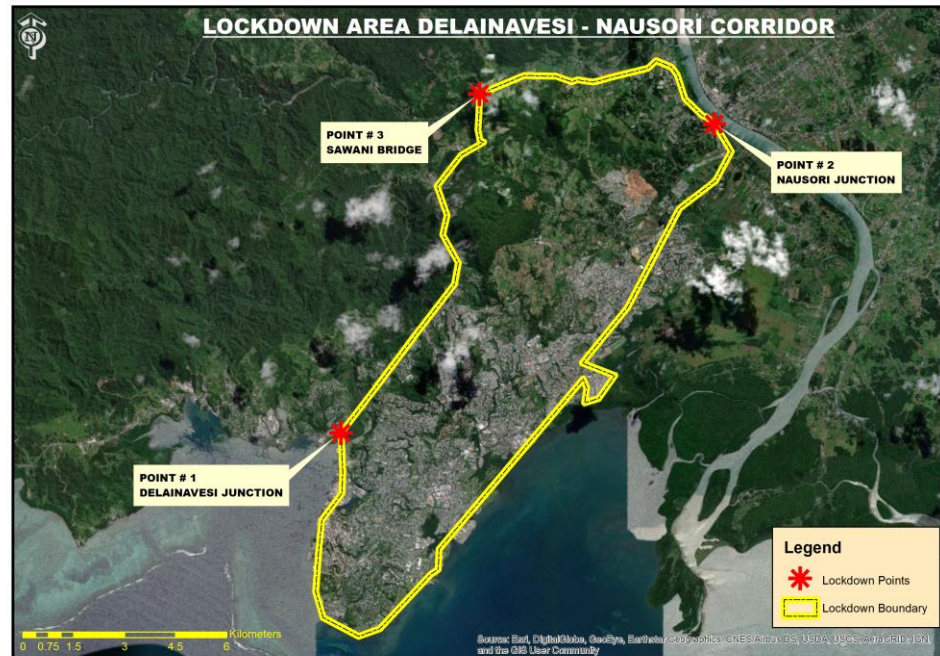
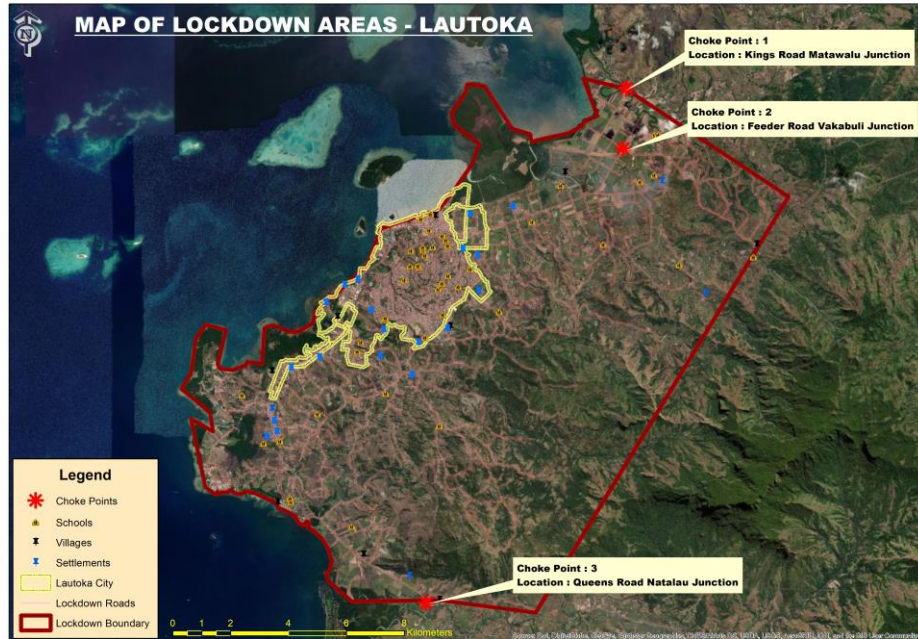
CASE RECOVERIES

FEVER CLINICS



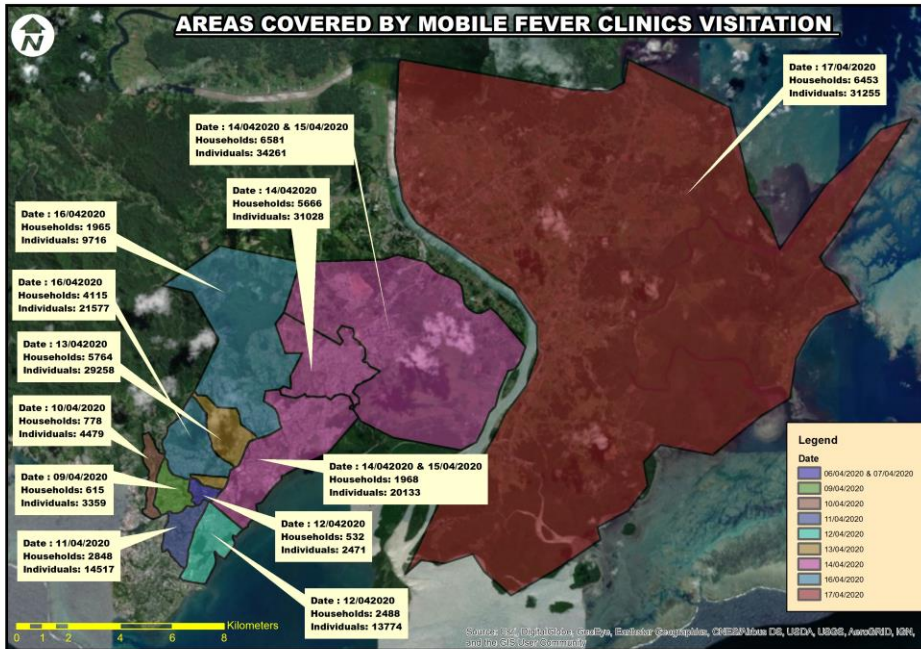
GIMs CORE ACTIVITIES

LOCKDOWN AREAS



GIMs CORE ACTIVITIES

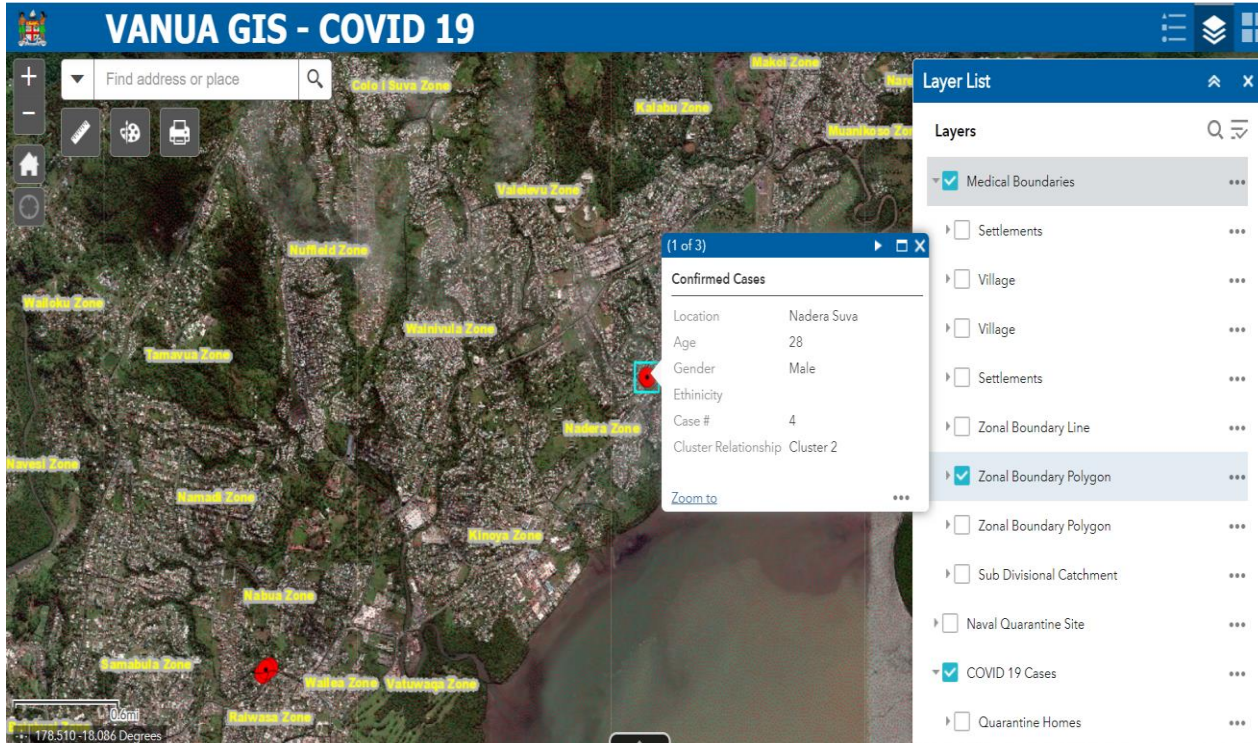
MOBILE FEVER CLINIC – MASS SCREENING INITIATIVE



GIMs CORE ACTIVITIES

9

2. COVID 19 VANUA GIS WEB APP

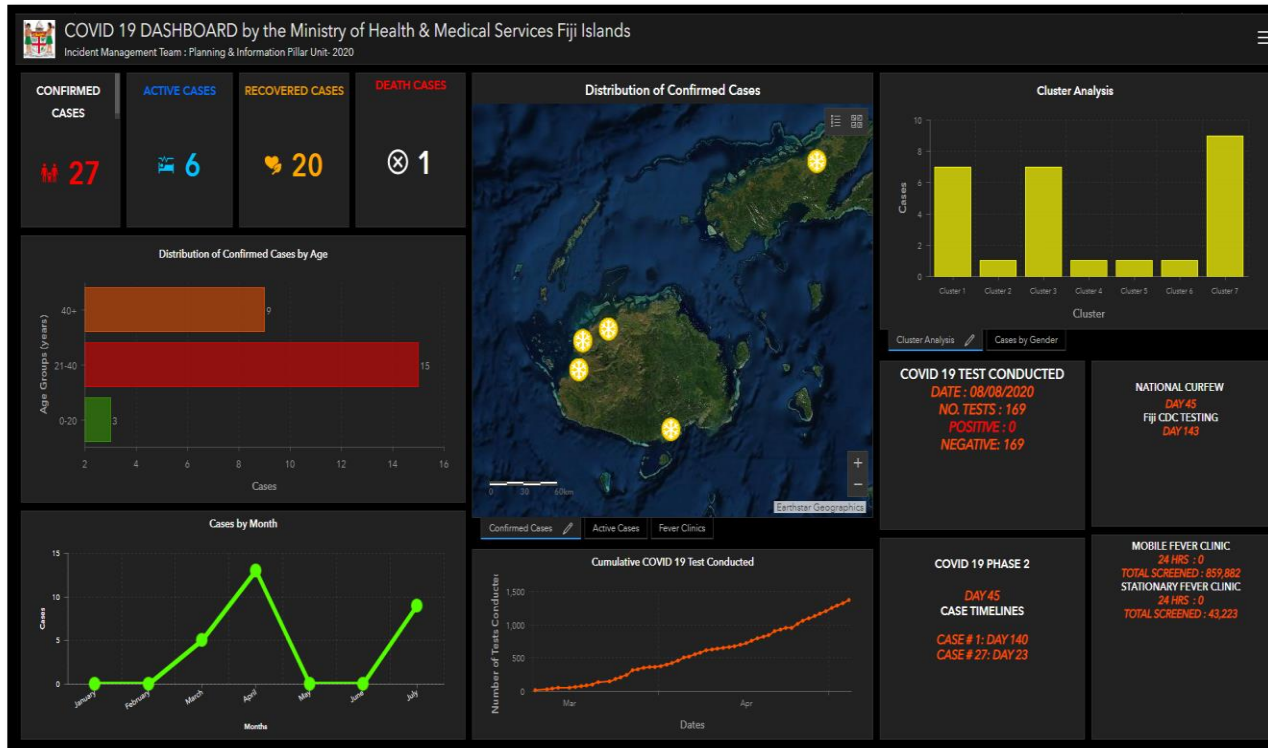


- ✓ COVID 19 Cases
- ✓ Contact Tracing
- ✓ Mass fever screening
- ✓ Isolation facilities
- ✓ Stationary fever clinics
- ✓ Lockdown
- ✓ RFMF/FPF Curfew check points
- ✓ Health Facilities
- ✓ Medical Boundaries
- ✓ Census
- ✓ Topographic information

GIMs CORE ACTIVITIES

10

3. COVID 19 GIS DASHBOARD

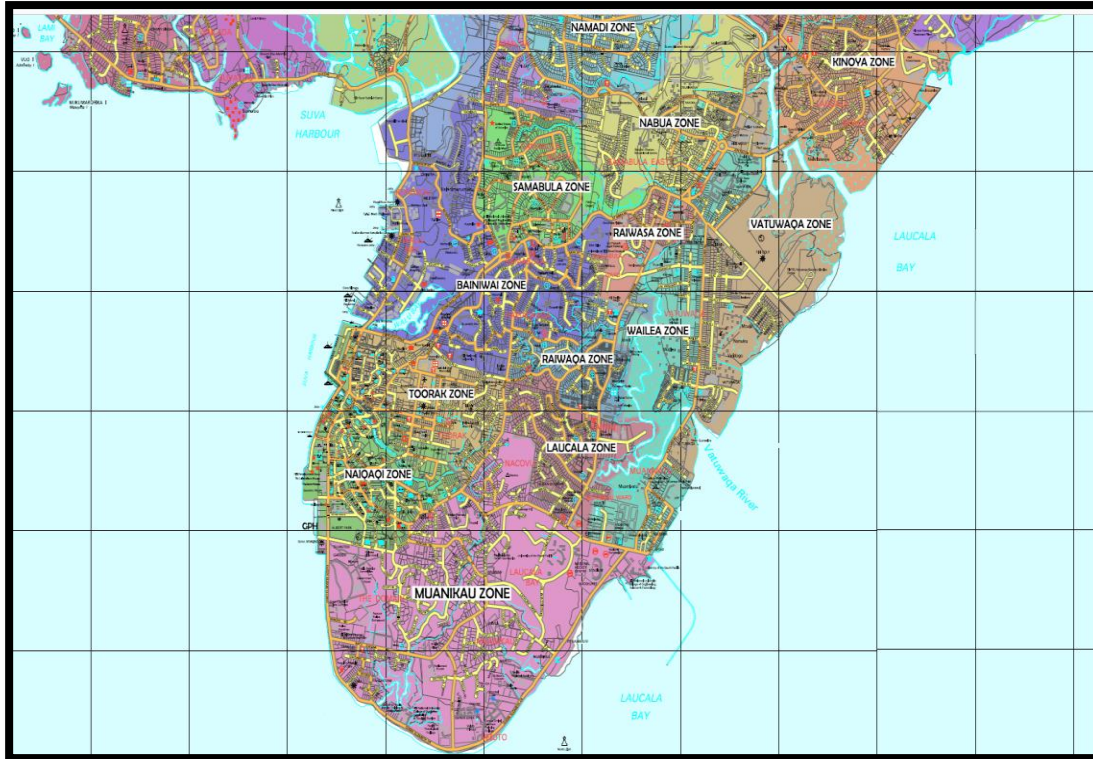


- ✓ Confirmed cases
- ✓ Active cases
- ✓ Recoveries
- ✓ Case fatalities
- ✓ Age distribution
- ✓ Monthly case surveillance
- ✓ Fiji CDC COVID 19 testing
- ✓ Cluster Analysis
- ✓ Cases by gender
- ✓ Case timelines
- ✓ Countdown
- ✓ Mass fever screening

GIMs CORE ACTIVITIES

11

3. REMODELLING OF HEALTH SERVICE PROVISIONS IN THE COVID WORLD



- ✓ Zone name
- ✓ Starting and end point
- ✓ Division
- ✓ Subdivision
- ✓ Medical area
- ✓ Area coverage
- ✓ Total population
- ✓ Male count
- ✓ Female count
- ✓ Villages
- ✓ Settlements
- ✓ Information settlements
- ✓ Roads
- ✓ Streets
- ✓ Places
- ✓ Housing sports complex
- ✓ Religious sites
- ✓ schools

CONCLUSION

- Geospatial Information plays a vital role in the health sector
- Acknowledgement – MOHMS, MLMR, Council Members
- UNGGIM Recognition
- USP, University of Otago and the PGRSC



THANK YOU

